

Flinders Ports
SOUTH AUSTRALIA

SPENCER GULF PILOT PASSAGE PLAN

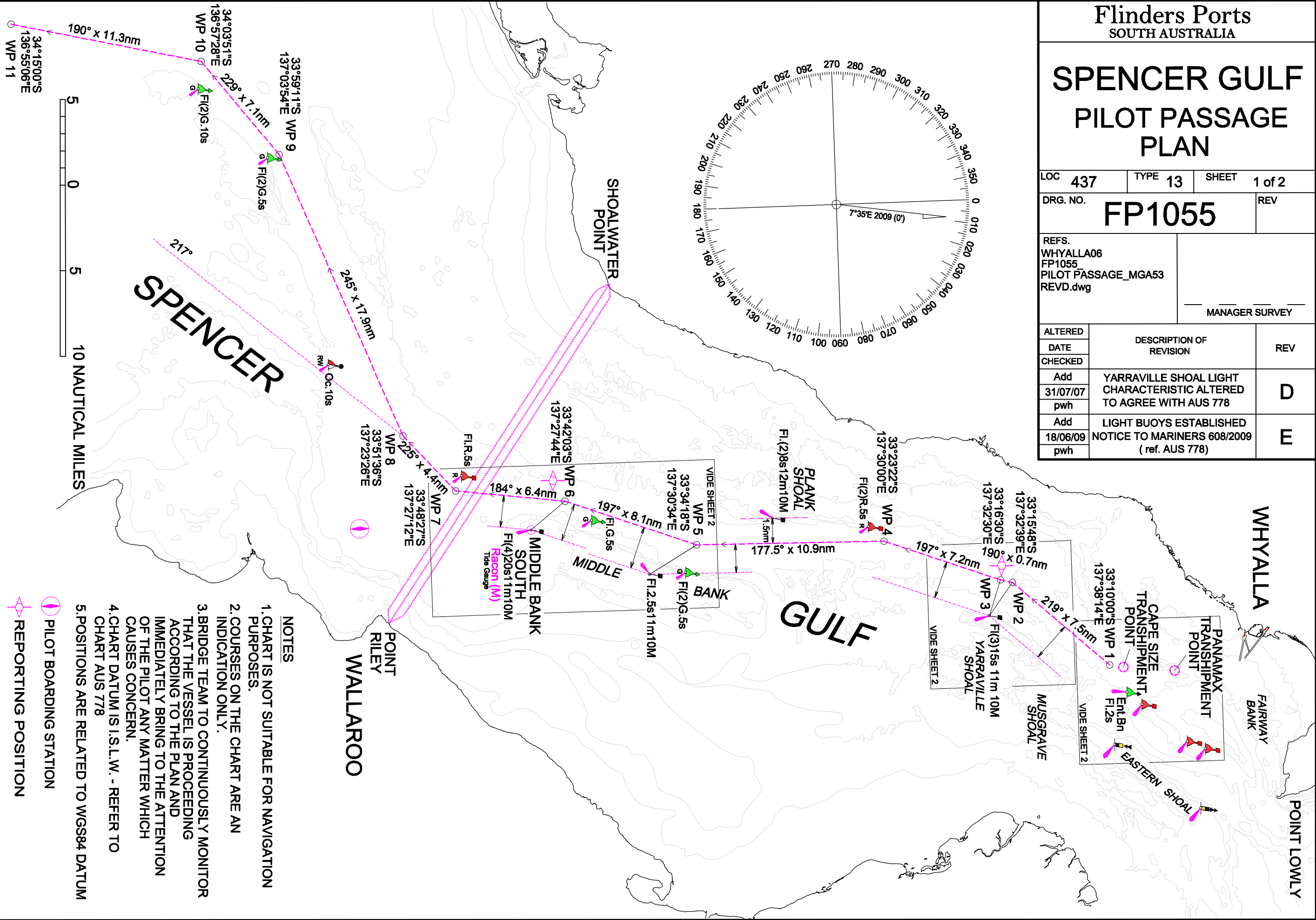
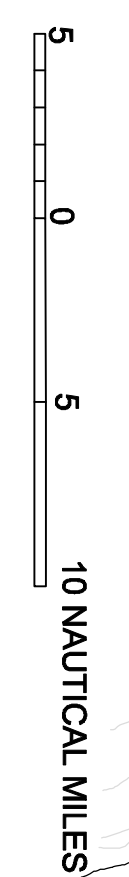
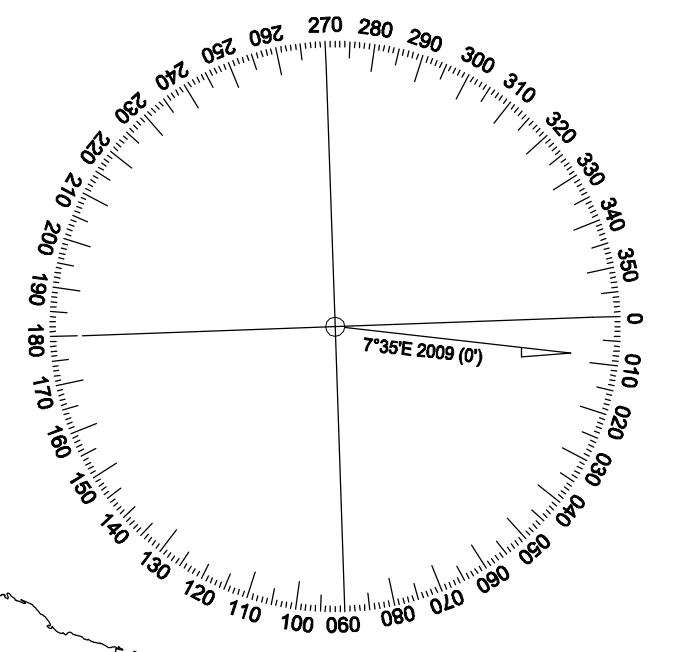
LOC 437 TYPE 13 SHEET 1 of 2

DRG. NO. **FP1055** REV

REFS.
WHYALLA06
FP1055
PILOT PASSAGE_MGA53
REVD.dwg

MANAGER SURVEY

ALTERED DATE CHECKED	DESCRIPTION OF REVISION	REV
Add 31/07/07 pwh	YARRAVILLE SHOAL LIGHT CHARACTERISTIC ALTERED TO AGREE WITH AUS 778	D
Add 18/06/09 pwh	LIGHT BUOYS ESTABLISHED NOTICE TO MARINERS 608/2009 (ref. AUS 778)	E



- NOTES**
1. CHART IS NOT SUITABLE FOR NAVIGATION PURPOSES.
 2. COURSES ON THE CHART ARE AN INDICATION ONLY.
 3. BRIDGE TEAM TO CONTINUOUSLY MONITOR THAT THE VESSEL IS PROCEEDING ACCORDING TO THE PLAN AND IMMEDIATELY BRING TO THE ATTENTION OF THE PILOT ANY MATTER WHICH CAUSES CONCERN.
 4. CHART DATUM IS I.S.L.W. - REFER TO CHART AUS 778
 5. POSITIONS ARE RELATED TO WGS84 DATUM

- PILOT BOARDING STATION
- REPORTING POSITION

SPENCER GULF PILOT PASSAGE PLAN

LAND USE COMMERCIAL	DRAWN Add 19/09/06
PARCEL IDENT.	CHECKED
	C.T. _____
REFS. WHYALLA06 FP1058_ PILOT PASSAGE_SHT2 REVD.dwg	MANAGER SURVEY
JOB NO.	SHEET 2 of 2
MAP SHEET _____	DATUM _____

SCALE _____ METRES

NOTES

1. CHART IS NOT SUITABLE FOR NAVIGATION PURPOSES.
2. COURSES ON THE CHART ARE AN INDICATION ONLY.
3. BRIDGE TEAM TO CONTINUOUSLY MONITOR THAT THE VESSEL IS PROCEEDING ACCORDING TO THE PLAN AND IMMEDIATELY BRING TO THE ATTENTION OF THE PILOT ANY MATTER WHICH CAUSES CONCERN.
4. CHART DATUM IS I.S.L.W. - REFER TO CHART AUS 778

 PILOT BOARDING STATION

 REPORTING POSITION

E	LIGHT BUOYS ESTABLISHED	Add	
	NM 608/2009 (ref AUS 778)	18/06/09	
D	YARRAVILLE SHOAL LIGHT CHARACTERISTIC ALTERED (ref AUS778)	Add	
		31/07/07	pwh
REV.	DESCRIPTION OF REVISION	ALTERED	SURVEYOR
		DATE	C.H.S.
		CHECKED	M.S.

LOC	437	TYPE	13
-----	-----	------	----

DRG. NO. **FP1058**

SUPERSEDES DRG.

