

1. Procedure

1.1 Adelaide Vessel Traffic Service (VTS)

Flinders Ports – Port Adelaide is authorised as a Vessel Traffic Service (VTS) Authority in accordance with the provisions of Marine Order 64 (Vessel Traffic Services) 2013 (MO64).

Adelaide VTS is located in the Passenger Terminal, Oliver Rogers Road, Outer Harbor.

Call sign – “Adelaide VTS’.

Adelaide VTS, is authorised to render the following services as defined in the guidelines for VTS mentioned in IMO resolution A.857 (20):

- Information Service (INS)
- Traffic Organisation Service (TOS)
- Navigational Assistance Service (NAS)

INS is defined as a service to ensure essential information becomes available in time for on-board navigational decision making.

TOS is defined as a service to prevent the development of dangerous marine traffic situations and to provide for the safe and efficient movement of vessel traffic within the declared VTS area.

NAS is defined as a service to assist on-board decision making and to monitor its effects, especially in difficult navigational or meteorological circumstances or in the case of defects or deficiencies.

1.1.1 Participation of vessels

It is mandatory for all vessels over 150 GRT or where there is no GRT, any vessel having length overall of greater than 35 metres and operating within the VTS coverage area to participate in the VTS.

Additionally;

- All commercial vessels when operating within the VTS coverage area will be required to participate in the VTS reporting requirements.
- The Adelaide VTS may request any other vessel entering the VTS coverage area to participate in the VTS reporting requirements.

1.2 Communications

Adelaide VTS is the first and primary point of contact for all marine traffic.

Adelaide VTS maintains a listening watch on VHF Channel 12 and Channel 16.

All vessels shall maintain a listening watch on VHF channels 12 and 16 when within or approaching Port Adelaide port limits. *Port Authorities Regulations 2001, Schedule 1, Division 4, Clause 37.*

1.2.1 Vessel reporting procedures inbound

4 hours to Pilot Boarding Ground (PBG);

- Vessels reporting requirements:
 - ETA to PBG

- Ship security level
- Vessels current drafts
- Status of thrusters – non/operational
- **Information given by Adelaide VTS:**
 - Acknowledge information received
 - Port security level
 - Berthing information or anchorage position
 - Next reporting point: one hour to PBG

1 hour to Pilot Boarding Ground;

- **Vessels reporting requirements:**
 - ETA to PBG
 - Any vessel defects affecting navigation
- **Information given by Adelaide VTS:**
 - Acknowledge information received
 - Pilot boarding information – time and boarding arrangements or,
 - Confirm anchorage position
 - Relevant traffic information
 - Next reporting point: when anchored or pilot on board

At anchorage or Pilot Boarding Ground;

- **Vessels reporting requirements:**
 - Anchored time
 - Pilot on board time
 - Planned route inbound
- **Information given by Adelaide VTS**
 - Acknowledge information received
 - Advise weather information

At berth;

- **Vessels reporting requirements:**
 - First line and all fast time
 - Name of berth
- **Information given by Adelaide VTS:**
 - Acknowledge information received

1.2.2 Vessel reporting procedures outbound

15 minutes prior to singling up;

- **Vessels reporting requirements:**
 - Singling up time
 - Name of berth
 - Any vessel defects affecting navigation
 - Vessels current drafts
- **Information given by Adelaide VTS**
 - Acknowledge information received
 - Advise weather information
 - Relevant traffic information
 - Next reporting point: last line

Departing berth;

- **Vessels reporting requirements:**
 - Last line time
 - ETA to pilot disembarkation
- **Information given by Adelaide VTS:**
 - Acknowledge information received
 - Next reporting point: pilot disembarks

At pilot disembarkation;

- **Vessels reporting requirements:**
 - Pilot off time
- **Information given by Adelaide VTS:**
 - Acknowledge information received
 - Relevant traffic information

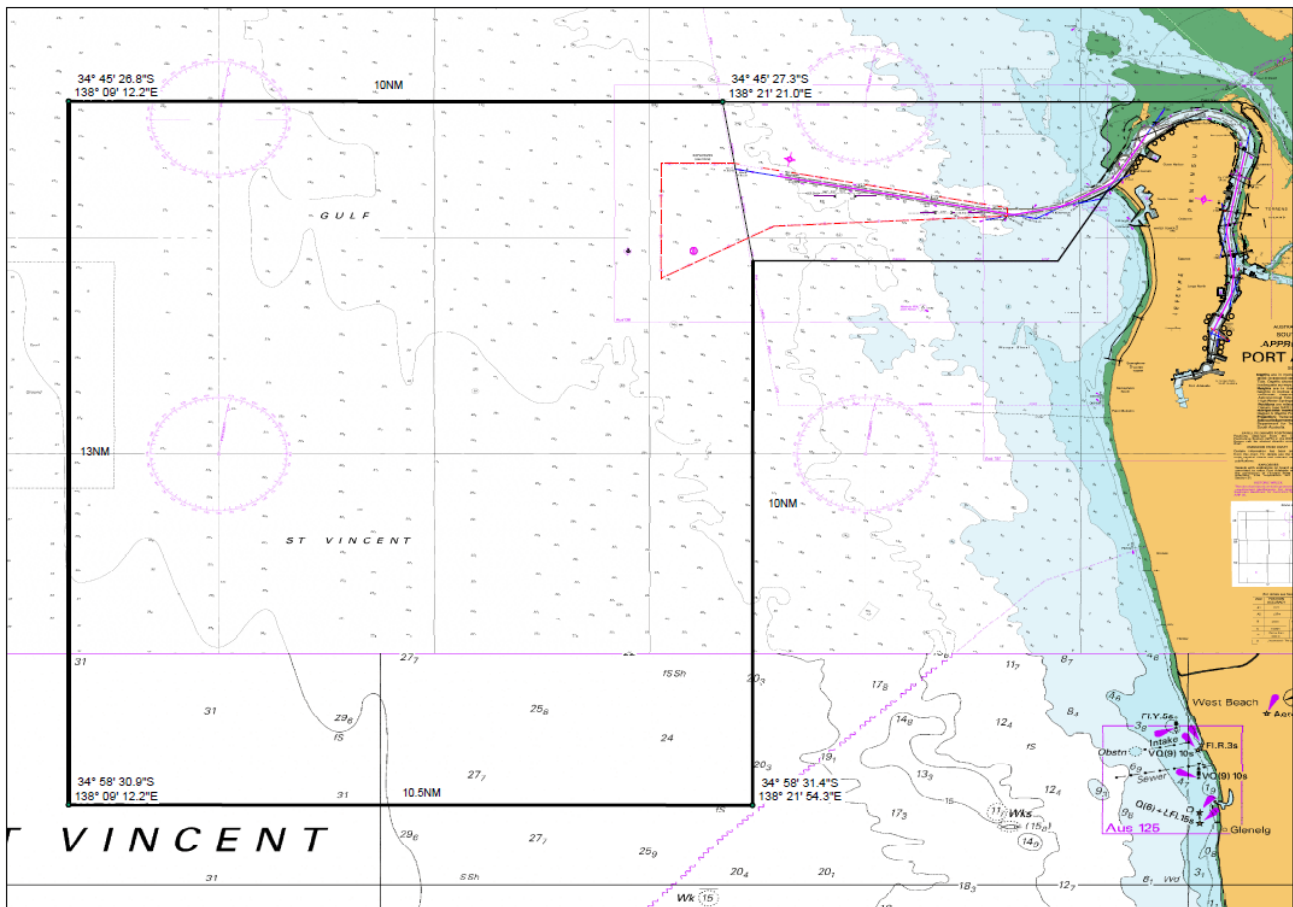
2. Responsibilities

- Vessel Traffic Services

3. Records

- Shipping Alterations Form

ANNEX



4. Procedure Review

- 4.1 This procedure will be reviewed at least once every 2 years or in accordance with any legislative, business or other relevant changes.

5. References

The current version of the following references is relevant to this procedure:

- IALA Recommendation V-127 (latest edition)
- Port Adelaide Port Rules

6. Definitions

- **Flinders Port Holdings or FPH or Group** – Refers to Flinders Port Holdings Pty Ltd (and any of its subsidiaries).
- VTS – Vessel Traffic Service
- DIT – Dept for Infrastructure and Transport
- FP IT Dept – Flinders Ports Information Technology Department
- PORTMIS – Port Management Information System

7. Document Owner

- Port Operations Manager.
- Should any changes be required to this document, please contact the document owner directly.