

# UNDER KEEL CLEARANCE

VESSEL \_\_\_\_\_ DATE \_\_\_\_\_

CHANNEL DEPTH \_\_\_\_\_  
 TIDE + \_\_\_\_\_  
 TOTAL \_\_\_\_\_  
 MAXIMUM DRAFT - \_\_\_\_\_  
 UKC \_\_\_\_\_

REMARKS

Flinders Ports  
SOUTH AUSTRALIA

# PORT GILES PILOT PASSAGE PLAN

LAND USE COMMERCIAL	DRAWN Add 25/7/01
PARCEL IDENT.	CHECKED PWH 30/8/01
	C.T.
REFS. GILES04 PASSAGE PLANS PILOT_PASSAGE_1.dwg	RHL 5/9/01 MANAGER SURVEY
JOB NO. A82636	SHEET 1 of 2
MAP SHEET 6427-IV	DATUM AMG 84 ZONE 53

SCALE \_\_\_\_\_ METRES

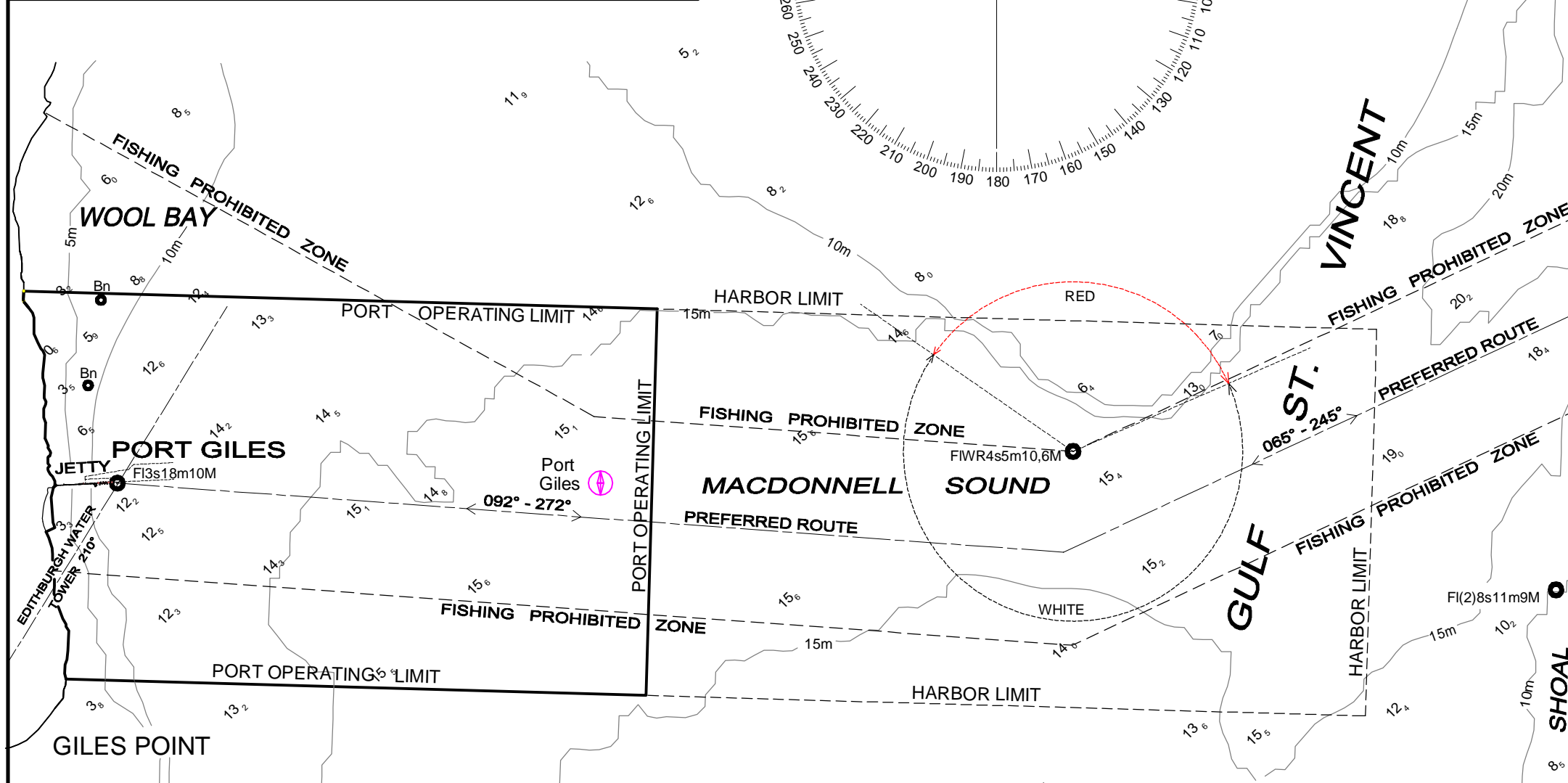
- NOTES
1. CHART IS NOT SUITABLE FOR NAVIGATION PURPOSES.
  2. COURSES ON THE CHART ARE AN INDICATION ONLY.
  3. BRIDGE TEAM TO CONTINUOUSLY MONITOR THAT THE VESSEL IS PROCEEDING ACCORDING TO THE PLAN AND IMMEDIATELY BRING TO THE ATTENTION OF THE PILOT ANY MATTER WHICH CAUSES CONCERN.
  4. CHART DATUM IS L.A.T. - REFER TO CHART AUS 139

		PILOT BOARDING STATION	
E	AMENDED BERTH & APPROACH ADDED	Add 11/08/06	PWH
REV.	DESCRIPTION OF REVISION	ALTERED DATE	SURVEYOR C.H.S.
		CHECKED	M.S.

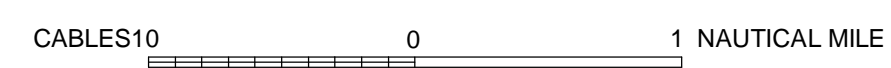
LOC 4641 TYPE 13

DRG. NO. **FP0153**

SUPERSEDES DRG. 25422/78



<b>DEPTH OF BERTH</b> Minimum depth .....14.7m	
<b>MANOEUVRING AREA ( FOR DEPARTURE )</b> Minimum depth .....13.5m	
<b>UNDERKEEL CLEARANCE REQUIRED</b>	
<b>Vessels to 220m</b>	<b>Vessels in excess 220m</b>
On arrival 10% of draft On departure 0.6m minimum Alongside Berths 0.3m minimum	While Manoeuvring 10% of Draft Alongside Berths 0.6m minimum



**Flinders Ports**  
SOUTH AUSTRALIA

**PORT GILES  
PILOT PASSAGE  
PLAN**

LAND USE	COMMERCIAL	DRAWN	Add 27/7/01
PARCEL IDENT.		CHECKED	PWH 30/8/01
		C.T.	
REFS.	GILES04 PASSAGE PLANS PILOT_PASSAGE_2.dwg		
		MANAGER SURVEY	
JOB NO.	A82636	SHEET	2 of 2
MAP SHEET	6427-IV	DATUM	AMG 84 ZONE 53

SCALE METRES

- NOTES**
1. CHART IS NOT SUITABLE FOR NAVIGATION PURPOSES.
  2. COURSES ON THE CHART ARE AN INDICATION ONLY.
  3. BRIDGE TEAM TO CONTINUOUSLY MONITOR THAT THE VESSEL IS PROCEEDING ACCORDING TO THE PLAN AND IMMEDIATELY BRING TO THE ATTENTION OF THE PILOT ANY MATTER WHICH CAUSES CONCERN.
  4. CHART DATUM IS LAT - REFER TO AUS 139

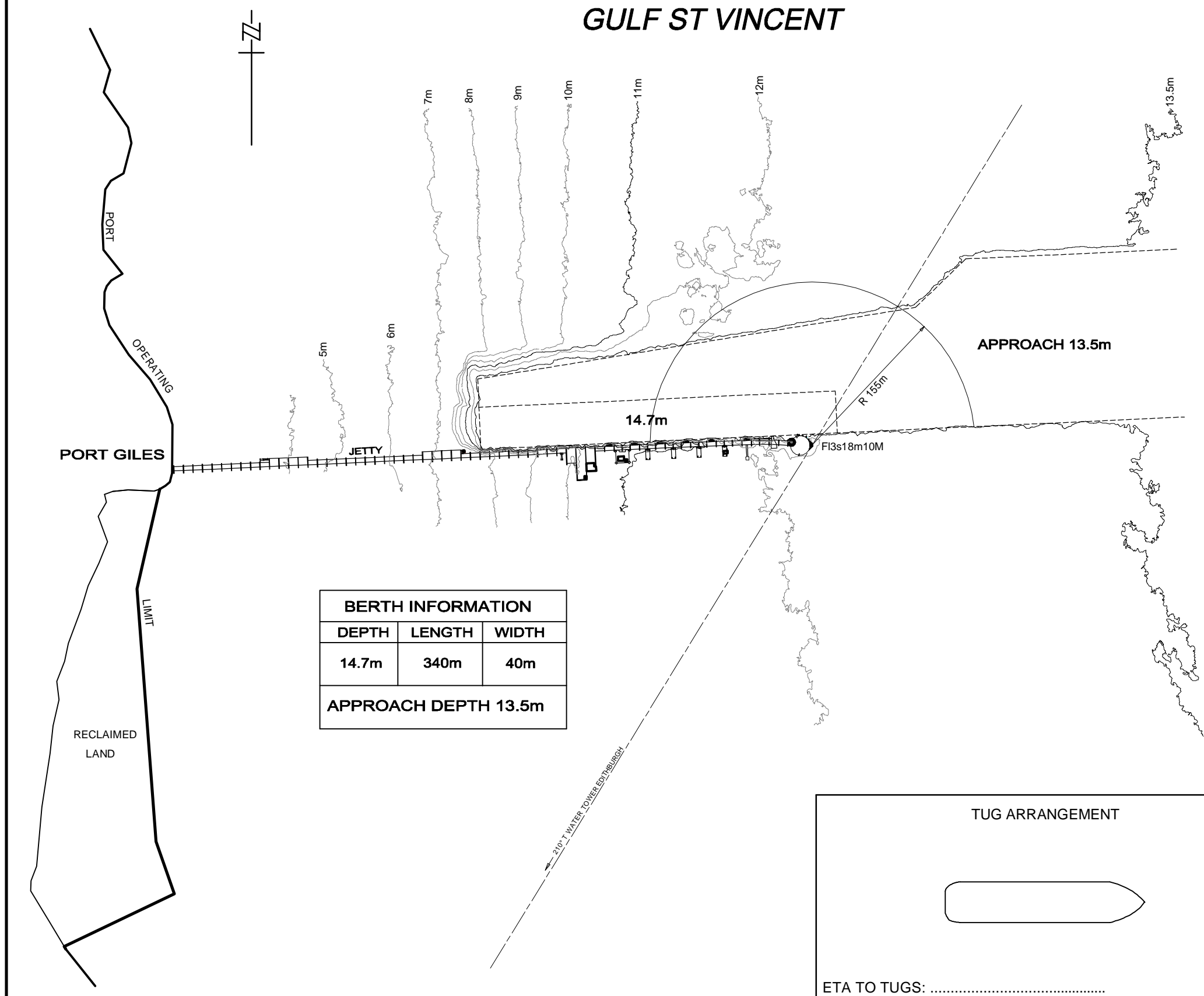
E	AMENDED BERTH & APPROACH ADDED	Add	
		11/08/06	
REV.	DESCRIPTION OF REVISION	ALTERED	SURVEYOR
		DATE	C.H.S.
		CHECKED	M.S.

LOC	4641	TYPE	13
-----	------	------	----

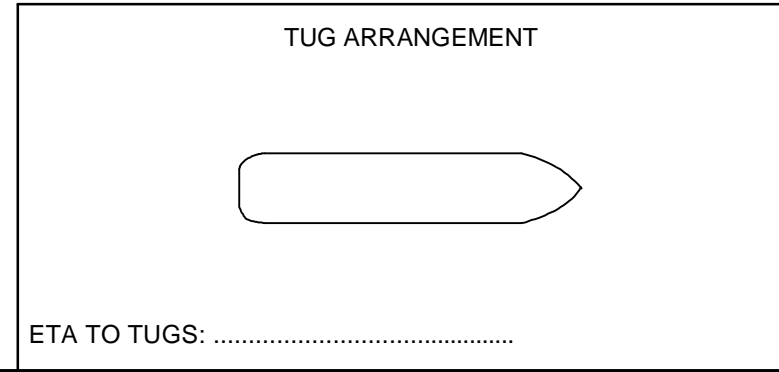
DRG. NO. **FP0154**

SUPERSEDES DRG. 25423/78

**GULF ST VINCENT**



BERTH INFORMATION		
DEPTH	LENGTH	WIDTH
14.7m	340m	40m
APPROACH DEPTH 13.5m		



PORT GILES

PORT  
OPERATING

LIMIT

RECLAIMED  
LAND

JETTY

APPROACH 13.5m

14.7m

Fl3s18m10M

R 155m

